

## THE FOUNDATION OF YOUR BUSINESS ONLINE



Website hosting is one of the most competitive markets in the Internet today. When faced with so many options it may be tempting to make a decision based solely on price, but the consequences of choosing the wrong host for your website can be extremely costly. You wouldn't think of opening a store without first researching the location; the same care must be applied when selecting a home on the Web for your business.

Not all Web hosts are created equally. While any will get your website online, there are vast differences in the technology used to do so. Equipment reliability (failures make your website inaccessible to customers) and security are real considerations, and bargain basement hosts often lack the stability to serve businesses effectively.

Fortunately, your Consultant can offer a variety of affordable, feature-packed hosting plans with security and reliability built-in. It's the advantage of Business-Grade Web hosting with our Data Center Partners.

**For more information on a secure and reliable hosting plan for your business' website, contact your local WSI Consultant today!**

## BUSINESS-GRADE WEBSITE HOSTING

WSI is the world's largest network of Internet Consultants with offices serving over 1500 local markets worldwide. Ranked the #1 Internet Services Business by Industry-leading *Entrepreneur magazine*, our proven systems are used to deliver thousands of economical e-Business solutions to small and medium-sized businesses annually.



The products and services described herein are the property of Research and Management Corporation (RAM), its affiliated or related companies and are provided by a franchisee of the WSI franchise system. © 2006 RAM. All rights reserved.



## ADVANTAGES OF BUSINESS-GRADE WEBSITE HOSTING

### ► Security

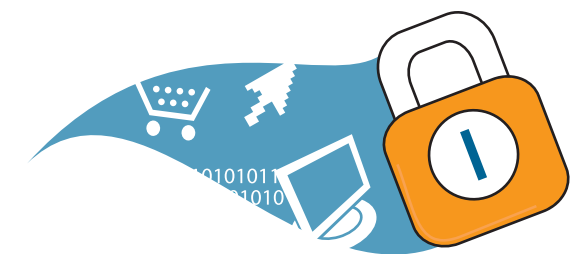
Our carefully screened and qualified Data Center Partners operate secure facilities with limited access to authorized personnel only. All Web servers are protected by firewalls with advanced intrusion detection features to guard against hacker threats that could potentially compromise your website's integrity, and use industry-leading 128-bit SSL encryption to keep sensitive data private and secure.

### ► Reliability

Systems are monitored 24 hours a day, 7 days a week by highly trained and certified support staff. Included daily data backups with off-site storage means unbeatable recovery and restore capability for your valuable website data. While many Web hosts charge a fee for this service, it's included with your hosting package at no additional charge.

### ► Value

Unlike other hosting providers, there are no hidden limits on your disk space or bandwidth usage; your Consultant will recommend the best plan for your business and explain what you're getting. With state-of-the-art hardware and a long list of features, you can't find more value in a Web host for your business.



WSM **WEBSITE**  
H O S T I N G

## TECHNICAL SPECIFICATIONS

- ✓ Genuine IBM Server Architecture
- ✓ Secure-Access Hosting Environment
- ✓ 24/7 Systems Monitoring
- ✓ 99.7% Service Availability
- ✓ Intrusion Detection
- ✓ Traffic Filtering
- ✓ Virus and Spam Protection
- ✓ Daily Off-Site Data Backups
- ✓ Multiple T1/T3 Data Connections
- ✓ 128-bit SSL Data Encryption
- ✓ RAID-5 Disk Drive Technology
- ✓ MS SQL, MySQL and MS ACCESS Databases
- ✓ ASP, PHP and .NET Scripting

**ALL THIS WITH NO  
HIDDEN LIMITATIONS OR FEES.**



Included with your Business-Grade Website Hosting package is the SmartMail email management solution. SmartMail gives you complete control over your email services and allows you to monitor your domain and employees' emails to:

- Ensure the proper routing of emails based on keywords within the content
- Monitor competitive activities or potential corporate espionage within the company
- Maintain and expand customer service levels
- Minimize productivity loss through inappropriate email use

Also included with your SmartMail system are the following value-added features:

### Web Messaging

Users can send and receive emails from any Web browser while enjoying their favorite desktop email features like spell-check, address book and file attachments.

### Web Calendaring

A Web-based calendar allows users to keep and store multiple schedules, appointments, task lists and date reminder information, all accessible through an intuitive and user-friendly Web-based interface.

### Security

Support for SSL (Secure Sockets Layer) encryption in Web Messaging and Web Calendaring protects passwords and content from unauthorized access.

### Compatibility

Users can also retrieve email through common client email software such as MS Outlook, Outlook Express, Eudora and more.